

FROM 23.09.2017

LIEGE GUILLEMINS TGV STATION

WWW.IWILLBE20IN2030.BE

“ EXPO
I WILL
BE 20
IN 2030 ”



 LIÈGE
université
200

Avec
le soutien de la



Wallonie

AN EXHIBITION WITHIN THE SCOPE OF THE UNIVERSITY OF LIEGE'S BICENTENARY



Wallonie

Service public
de Wallonie

Avec le soutien de la DGO6
Département du Développement
Technologique

The University of Liège was founded on 25th September 1817. To celebrate its bicentenary, the University intends to allude to its past, put the spotlight on its values and outline its challenges through a host of events.

As part of the partnership with the University of Liège, the firms Collections & Patrimoines and Europa 50, will inaugurate the exhibition "I will be 20 in 2030" on 23rd September 2017. The event will be hosted by the Liège-Guillemins station designed by the architect Santiago Calatrava.

COLLECTIONS & PATRIMOINES
AND EUROPA 50

Collections & Patrimoines and Europa 50 have been specialised in the creation, production and organisation of large-scale exhibitions for more than 25 years. The two firms' goal is to promote Belgian and international heritage by means of exhibitions that endeavour to promote artists, inventors or major figures of international standing. Far from being static exhibitions, they completely immerse visitors in the atmosphere of the exhibition's theme.

THE UNDERLYING THEME
OF THE EXHIBITION

The central theme of the exhibition is mankind of the future. All along the immersive exhibition route, visitors pass through large scale settings as well as simulations enriched with displays, explanatory texts and films. What are the main effects of science on everyday life? What is the impact of science on your birth, studies, work, leisure, environment, illnesses or death? The exhibition is based around four cross-disciplinary themes: **assisted mankind**, **connected mankind**, **responsible mankind** and **modified mankind**.



Describing the world in which we will live tomorrow and forecasting the major scientific advances of the forthcoming decades is a difficult and risky task. However, the future framework of our life just like the seeds of discoveries yet to come can be found in the research of today, in particular in universities. The exhibition *I will be 20 in 2030*; science and everyday life invites you on a journey into the future.

EUROPA 50 srl-fs

1A, RUE BELLE VUE
4840 WELKENRAEDT

TEL.: +32 4 224 49 38
INFO@CP-EXPO.BE

THE EXHIBITION ROUTE

1. **THE CREATIONS.** Immersed in a black box and bombarded with images, visitors are confronted with the ambiguity of human creations. Mankind has always been capable of the best but also the worst.

2. **THE MACHINE.** Where do we come from? Who are we? Where are we going? A giant robot is surrounded by characters with contradictory attitudes. It forces visitors to ponder. Will mankind retain its freedom or will it be subjugated by machines and artificial intelligence?



3. **THE BRAIN.** Visitors walk around a 3D brain and view the overhead projection of a film. The brain, the hub of creativity, is a complex organ. But how do we embark on the path to creativity and technical progress?

4. **INVENTIONS.** Some inventions have revolutionised the world and how we live our day to day lives. This zone is devoted to some of the main inventions as well as their respective inventors. Parallels are drawn between these innovations from the past and their current developments.



5. **HOUSING.** What will tomorrow's homes look like? they will be even more specially designed to meet mankind's needs. In the future, home automation will probably play an essential role. via a series of objects, visitors discover how connectivity, virtual reality and robots will modify our everyday life.



THE EXHIBITION ROUTE

6. **FOOD.** The digital revolution is underway and it will also have an impact on the food sector. This zone presents the food that will fill our plates tomorrow as well as the new means of agricultural production, such as aquaponics and hydroponics.

7. **ROADS.** What will tomorrow's mobility resemble? Visitors travel along a genuine photovoltaic road on which futuristic vehicles are displayed: a self-driving/connected car, a fuel-cell powered car, the first flying car, etc. Storage of energy (via Tesla batteries) as well as other forms of land, sea and air transport are also covered.

8. **CITIES.** Tomorrow's towns and cities will be smart and connected. This zone also presents future land planning: urban agriculture, new architecture, environmental protection, waste management and water treatment.

9. **SPACE.** Visitors go on a journey to the heart of a futuristic space station. A zone is devoted to Mars, with presentation on rocks from Mars and the ExoMars Rover, one of the missions of which is to establish whether there was or today still is life on Mars. Other themes such as space tourism, exoplanets and life elsewhere are also covered.



10. **MEDICINE.** The digital revolution will also have an impact on the medicine of tomorrow. Thanks to hyper-connectivity, patients will be better informed about their health. The themes covered in this zone are manipulation of the human genome, prosthetics, organ donation, self-diagnostics, telemedicine, hospital rooms of the future, etc.

11. **THE HEART, THE HUB OF OUR CONSCIENCE.** This décor is a giant 3D heart. The many areas of scientific progress will give rise to a wealth of ethical questions that mankind must deal with. Tomorrow, will we still be genuinely human? Eugenics, robotics and artificial intelligence will profoundly affect our lives.

12. **THE DESIRE FOR IMMORTALITY.** This zone is devoted to one of the major questions of life: death! Since time immemorial, finiteness has concerned mankind. Will our dreams of immortality come true through transhumanism? What will happen in the future if we are all immortal?



I will be 20...

... is a nod to our previous exhibitions. This time, we are no longer exploring the past, but looking to the future.

- "2030" is a date that is relatively close in time (13 years) because we will be presenting plenty of areas of scientific progress that are already in the making today and which will gradually begin to become part of our daily life. Others are reserved for eras further away.

- "SCIENCE" means the future will be envisaged from a scientific point of view and not one of science-fiction or sociology, for example. The fields of research and territories of today's science herald the discoveries and progress of tomorrow.

- "EVERYDAY LIFE" not only means that in the future science will be increasingly more integrated into our lives, but also that the exhibition will not look into pure research but will instead focus on the practical applications of science.

FROM 23.09.2017

LIEGE GUILLEMINS TGV STATION

MEETING WITH YOUR FUTURE

EUROPA



23/09/2017 > 03/06/2018

“ EXPO
I WILL
BE 20
IN 2030 ”

Open 7days/7

closed on 25/12/17 and 01/01/18

10.00 – 18.30
(Tickets > 17.00)

PRICES

E-tickets available online - discounts

	week	weekend/Holidays
Individual	14€	16€
Senior	12€	14€
Group (15 pers.min.)	10€	11€
Student (8-18)	10€	11€
Schoolgroup	8€	8€
0-7 years	/	/
Article 27	8€	8€
Family (2 child.+ 2 Indiv.)	45€	50€

Private Party

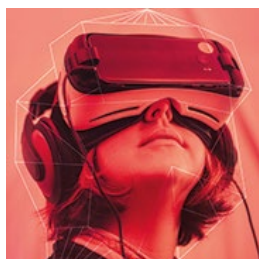
Booking : 04 / 224 49 38



TAKE THE TRAIN !



B-Excursions



www.EUROPAEXPO.be

Liege Guillemins TGV Station

+32 4 224 49 38

info@europaexpo.be





250.000 VISITORS



220.000 VISITORS



750.000 VISITORS



375.000 VISITORS



350.000 VISITORS



225.000 VISITORS



315.000 VISITORS



255.000 VISITORS



185.000 VISITORS